

# AND FORMULATES OUR VALUE CREATING BUSINESS MODEL

As a pioneer of Transit Oriented Developments (TOD), we are committed to understanding the continuously evolving stakeholder needs and expectations that will enable us to create value for all.

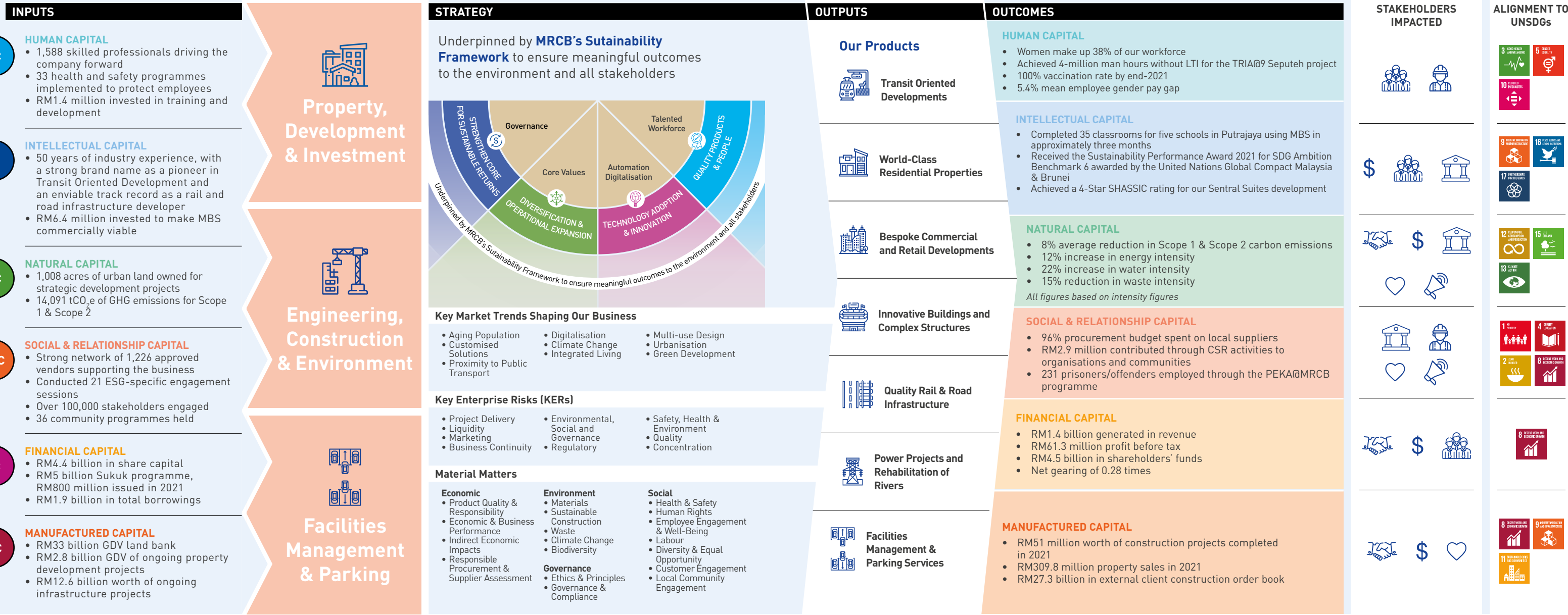
Purpose	Vision	Mission	Values
<b>To Build Meaningful Places for A Better Tomorrow</b>	<b>Setting the Standard</b>	<b>Leading the field sustainably through innovation in Property Development, Engineering and Construction</b>	<ul style="list-style-type: none"> <li>• Courageous</li> <li>• Creative</li> <li>• Driven</li> <li>• Customer Centric</li> <li>• Accountable</li> </ul>

## OUR VALUE CREATION PROCESS IS GOVERNED BY MINDFUL GOVERNANCE

We Rely On Our Resources

To Drive Our Business Activities

Creating Value For Our Stakeholders



## OUR COMPETITIVE ADVANTAGES....

- Pioneer of TOD in Malaysia, with five TODs in the pipeline.
- Largest listed Bumiputera construction company.
- Strong corporate governance practices, a constituent of FTSE4Good and a signatory of the Ten Principles of the United Nations Global Compact.
- Developed proprietary modular construction technology, MRCB Building System (MBS).
- Led by a Board and Management team that provides strong leadership, expertise and insights.
- Long pipeline of projects through an urban land bank of 1,008 acres, with a GDV of RM33 billion, an external client construction order book of over RM27.3 billion, and a strong balance sheet with net gearing of 0.28 times.